

Summerside

4 BED

WaterSOUND
ORIGINS®

POWELL LANDING EAST

By Boswell Builders

4 Bedrooms ■ 4.5 Bathrooms ■ Study ■ 3,062 Sq Ft Conditioned
379 Sq Ft Combined Porches ■ 2-Car Garage

watersound.com

850.213.5170

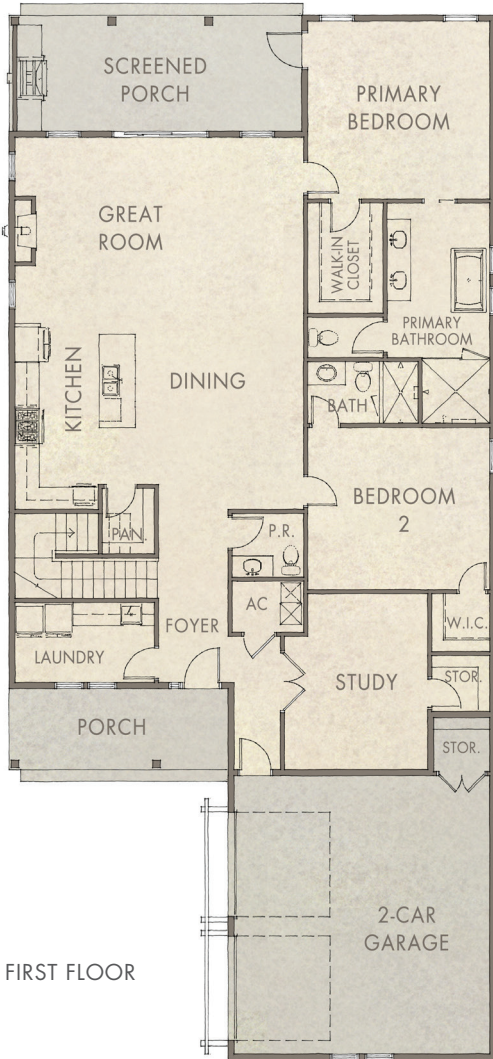
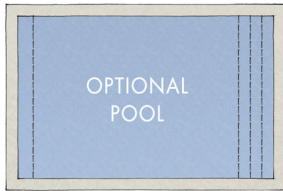


FRONT VIEW

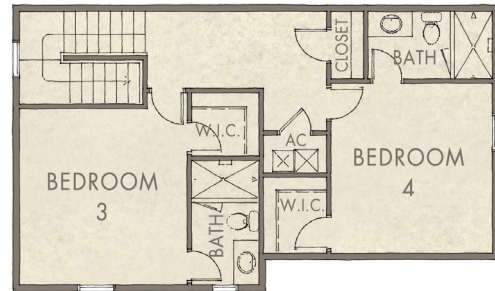


REAR VIEW

OPTIONAL POOL



FIRST FLOOR



SECOND FLOOR

SUMMERSIDE (4 BED)

WATERSOUND.COM

- 3,062 Sq Ft Conditioned
- 379 Sq Ft Combined Porches
- 2-Car Garage
- **Great Room:** 17' x 24'8"
- **Dining Area:** 15' x 12'6"
- **Study:** 15'2" x 12'4"
- **Primary Bedroom:** 15'4" x 15'8"
- **Bedroom 2:** 14' x 15'8"
- **Bedroom 3:** 13'9" x 13'3"
- **Bedroom 4:** 13'9" x 12'9"



BERKSHIRE HATHAWAY | BEACH PROPERTIES OF FLORIDA
HOMESERVICES

NEW HOMES DIVISION

©The St. Joe Company 2024. All rights reserved. "Camp Creek", "Watersound", "Watersound Beach Club", "Watersound Camp CreekSM", "Watersound ClubSM", "Watersound Origins", "Watersound Origins with tree design" and "Watersound Origins CrossingsSM" are service marks of The St. Joe Company. ©2024 BHH Affiliates, LLC. An independently operated subsidiary of HomeServices of America, Inc., a Berkshire Hathaway affiliate, and a franchisee of BHH Affiliates, LLC. Berkshire Hathaway HomeServices and the Berkshire Hathaway HomeServices symbol are registered service marks of Columbia Insurance Company, a Berkshire Hathaway affiliate. Equal Housing Opportunity. Actual development of the Watersound Origins community may not be as currently proposed and no guarantee is made that any future improvements, facilities, and features will be built or, if built, will be of the same type, size, or nature as currently described or contemplated. The materials and features and amenities described and depicted herein are based upon current development plans, which are subject to change without notice. Room dimensions and square footages are approximations. Map not drawn to scales. A Watersound ClubSM (the "Club") membership is for a private club that permits Watersound Origins owners the use of the Village Commons, Lake Powell, and other facilities designated by the Club. Use of additional Club Facilities requires purchase of a separate membership upgrade. Club membership and use of the Club Facilities may be subject to application and acceptance, payment of applicable fees and dues, and membership requirements, rules and other limitations, all of which are subject to change. All parties who build homes in the Watersound Origins community are independently owned and operated. The St. Joe Company does not guarantee the obligations of, nor provide any warranties for unaffiliated parties who build homes or offer services in the Watersound Origins community. This material shall not constitute an offer in any jurisdiction where prior registration or other advance qualifications of real property is required and has not been completed. Void where prohibited by law. Equal Housing Opportunity. Obtain the Property Report required by Federal Law and read it before signing anything. No federal agency has judged the merits or value, if any, of this property. Kentucky Registration #R-171. For NY Residents: THE COMPLETE OFFERING TERMS FOR THE SALE OF LOTS ARE IN THE CPS-12 APPLICATION AVAILABLE FROM SPONSOR, THE WATERSOUND COMPANY, LLC. FILE NO. CP18-0089. 12/22